

# Foster Care Children

## A Vulnerable Population at Risk

19<sup>th</sup> International Nursing Research Congress Focusing  
on Evidence Based Practice in Singapore



**Delilah Bruskas, RN, MN**  
**July 9, 2008**

# The Child Welfare System

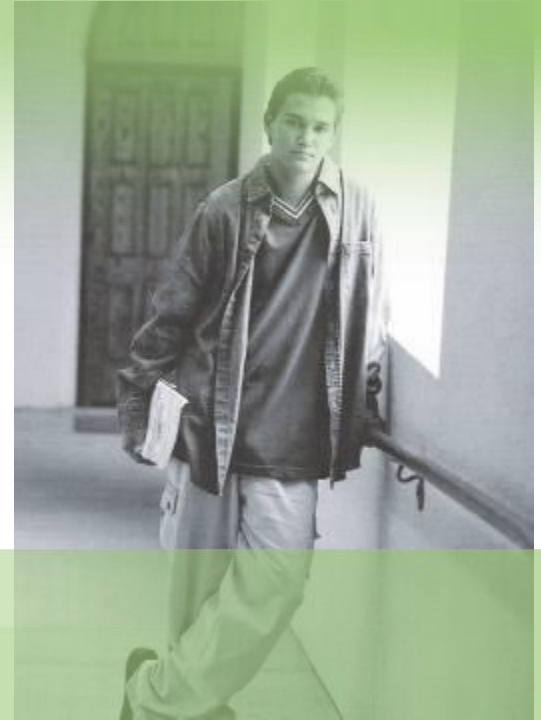
**Purpose is to protect vulnerable children at risk**

**Administration for Children and Families**

**U.S. Department of Health and Human Services (DHHS)**

**Foster Care**

**Foster Child**



# Foster Care Children

**513,000 Foster Children Nationally**

**Prior Exposures of Maltreatment**

**Nearly 63% are Victims of Neglect**

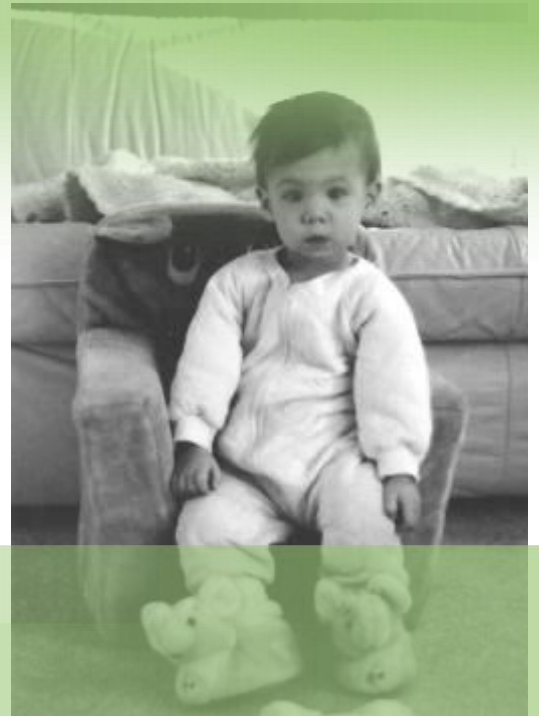


# Foster Care Risk Factors

**Aday (1994) Vulnerable Population by Latin Definition refers to “Wound”**

**Traumatic Experiences and Susceptibility for Further Wounds**

**Affect Immediate and Future Health**



# Mental and Developmental Outcomes of Foster Children

## Mental Health

54.4% mental health problems  
Untreated problems

## Education

50% will not graduate  
Numerous obstacles  
Lost school records

## Transition to Young Adulthood

Not developmentally ready  
Homelessness  
Trouble finding jobs



# Child Welfare Accountability

## Performance Outcomes

**2000 - Children's Bureau**  
developed an evidenced  
based Statewide Review of  
Child Welfare System  
Outcomes

**2001 - Implementation**

**2004 –Child and Family  
Services Reviews Results**



# Oppression and Domination

“Five Faces of Oppression” Young (1990)

**Exploitation**

**Marginalization**

**Powerlessness**

**Cultural Imperialism**

**Violence**



# Exploitation

**Young (1990) “Capitalist societies” who “exercise their capacities under the control, according to the purposes, and for the benefit of others” constitutes a form of exploitation**



# Marginalization

Young (1990) “A whole category of people is expelled from useful participation in social life”



# Powerlessness

Young (1990), “are those who lack authority or power” and those who must obey without say and who do not give orders themselves



# Cultural Imperialism

Young (1990) “involves the universalization of a dominant group’s experience and culture, and its establishment as the norm”

“Deviance and Inferiority”



# Violence

Young (1990) “social injustice”  
happens when “daily knowledge”  
...socially accepted”

Early Interventions



# Systemic Foster Care Orientation

**Dispel “hostile” intent**

**Answer questions**

**Legitimize traumatic experiences**

**Help children discern emotions**

**Without help children will struggle alone**



# Conclusion

**“Loss of a loved person...”** Bolby  
(1998)

**Social setting of foster care**

**Poor mental and developmental  
outcomes**

**“Ideology of choice”...Lowenberg  
(1995)**

**Oppression and Domination**



# “The Prayer”

Andrea Bocelli and Celine Dion

“I pray you’ll be our eyes, and watch us  
where we go

And help us to be wise, in times when  
we don’t know

Let this be our prayer, when we lose  
our way

Lead us to the place, guide us with  
your grace

To a place where we’ll be safe

**...Just like every child needs to find a  
place...”**

